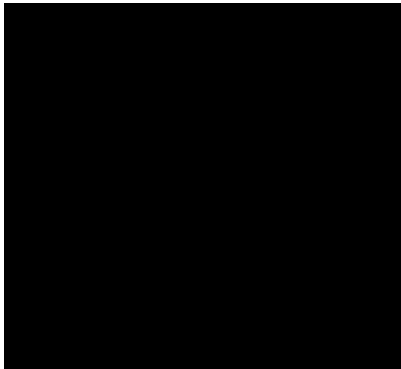


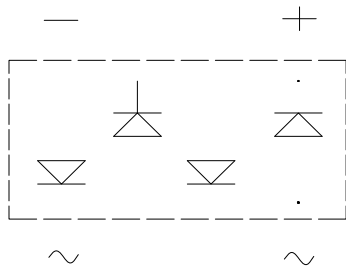


Bridge Rectifiers



Features

- UL recognition, file #E313149
- Ideal for automated placement
- Glass passivated chip junction
- High surge current capability



- Terminals:** Tin plated leads, solderable per J-STD-002 and JESD22-B102
- Polarity:** As marked on body

Maximum Ratings (T_a=25 Unless otherwise specified)

					* ∞	, ∞	% ∞∞	
AUI] a i a FAG J c` hU[Y	JFAG	J	%(O	&, O	(&O) * O	+ ∞	
AUI] a i a DCV` c W_] b[J c` hU[Y JDC		J	&∞	(∞	* ∞	, ∞	% ∞∞	
Aj Yf U[Y f YWh] Z] YX ci h di h Wi f f Yb h A 4 * Oh g] bY kUj Yž F -` c UXž HW1 %&+							1.5	
Forward Surge Current (Non-repetitive) @60Hz Half-sine wave, 1 cycle, T _j =25	IFSM	A						50
Forward Surge Current (Non-repetitive) @1ms, square wave, 1 cycle, T _j =25								100
Current squared time @1ms t<8.3ms T _j =25 Rating of per diode	I ² t	A ² s						10.4
Storage temperature	T _{stg}							-55 ~ +150
Junction temperature	T _j							-55 ~ +150

Electrical Characteristics T_a=25 Unless otherwise specified

PARAMETER	SYMBOL	UNIT	TEST CONDITIONS	ABS1502	ABS1504	ABS1506	ABS1508	ABS1510	
Maximum instantaneous forward voltage drop per diode	V _F	V	I _F M=0.7A						0.95
Maximum DC reverse current at rated DC blocking voltage per diode	I _R	μA	T _j =25						5
			T _j =125						100
Typical junction capacitance	C _j	pF	Measured at 1MHz and Applied Reverse Voltage of 4.0 V.D.C						17



ABS1502 THRU ABS1510

Thermal Characteristics $T_a=25$ Unless otherwise specified

PARAMETER		SYMBOL	UNIT	ABS1502	ABS1504	ABS1506	ABS1508	ABS1510
Thermal Resistance	Between junction and ambient	R J-A	/W	62.5				
	Between junction and lead	R J-L		25.0				
	Between junction and case	R J-C		8.0				

Note: Device mounted on P.C.B with 35mm*25mm*1.7mm

Ordering Information (Example)

PREFERED P/N	PACKING CODE	UNIT WEIGHT(g)	MINIIMUM PACKAGE(pcs)	INNER BOX QUANTITY(pcs)	OUTER CARTON
--------------	--------------	----------------	-----------------------	-------------------------	--------------



ABS1502 THRU ABS1510

Outline Dimensions

ABS		
Dim	Min	Max
A	4.30	4.50
B	6.00	6.40
C	3.90	4.10
D	4.90	5.10
E	1.25	1.45
F	1.60 Max	
G	0.60	0.70
H	0.15	0.25
I	0.30	0.80

Suggested pad layout



ABS1502 THRU ABS1510

Disclaimer

The information presented in this document is for reference only. Yangzhou Yangjie Electronic Technology Co., Ltd. reserves the right to make changes without notice for the specification of the products displayed herein to improve reliability, function or design or otherwise.

The product listed herein is designed to be used with ordinary electronic equipment or devices, and not designed to be used with equipment or devices which require high level of reliability and the malfunction of which would directly endanger human life (such as medical instruments, transportation equipment, aerospace machinery, nuclear-reactor controllers, fuel controllers and other safety devices), Yangjie or anyone on its behalf, assumes no responsibility or liability for any damages resulting from such improper use of sale.

This publication supersedes & replaces all information previously supplied. For additional information, please visit our website [http:// www.21yangjie.com](http://www.21yangjie.com) , or consult your nearest Yangjie's sales office for further assistance.